

HealthStreet

RESEARCH HELPING PEOPLE



# Community Health Needs Assessment

Prepared by:

Department of Epidemiology

College of Public Health and Health Professions &

College of Medicine

University of Florida

Linda B. Cottler, PhD, MPH

Email: [lbcottler@ufl.edu](mailto:lbcottler@ufl.edu)

Phone: (352) 273-5468

**Through June 2019**

# Table of Contents

❑ Abbreviations and Definitions .....	1
❑ About HealthStreet .....	2
❑ Figure 1: County of residence among HealthStreet members, from October 2011 through June 2019 .....	2
❑ Methodology .....	3
❑ Figure 2: HealthStreet CHW Model .....	2
❑ Table 1: Demographics of HealthStreet members by year of intake .....	4
❑ Table 2: Access to care by year of intake .....	5
❑ Table 3: Research perceptions by year of intake .....	5
❑ Table 4: Overall health conditions by year of intake .....	6-7
❑ Table 5: Substance use by year of intake .....	8-9
❑ Table 6: Top 8 health concerns by year of intake .....	10
❑ Table 7: Top 3 neighborhood concerns by year of intake .....	10
❑ References .....	11
❑ Contact Us .....	12

## Abbreviations and Definitions

<b>CHW</b>	Community Health Worker. CHWs are lay community members who share a common language and culture with the people they serve.
<b>CTSA</b>	Clinical and Translational Science Award, supported by the National Center for Translational Sciences of the National Institutes of Health under University of Florida Clinical and Translational Science Award UL1TR001427.
<b>NIH</b>	National Institute of Health
<b>NIDA</b>	National Institute on Drug Abuse

## About HealthStreet

HealthStreet is a community engagement model that seeks to reduce disparities in health research and access to care; the backbone of the model is the Community Health Worker (CHW). Founded and developed in 1989 at Washington University in St. Louis (Cottler PI), HealthStreet was initiated at University of Florida (UF) in 2011 with the creation of the Department of Epidemiology.

CHWs engage community members in discussions at barbershops, beauty shops, parks, bus stops, community agencies, churches, neighborhood associations, health care facilities, sports venues, grocery stores, laundromats, nail salons, fitness centers, colleges, health fairs, and other places people congregate.<sup>1</sup> Community members are invited by CHWs to join the HealthStreet Registry which requires a 30-minute, IRB approved, health assessment and blood pressure reading<sup>2</sup> including social determinants of health, health conditions and concerns, including mental health and substance use, and research perceptions. Members are followed at 60 days post-assessment and continuously as relevant research becomes available. They continue to be offered linkages to medical and social services and opportunities to participate in health research. HealthStreet Gainesville (opened in 2011) and HealthStreet Jacksonville (opened in 2013) have a growing population of community members who are in the HealthStreet Registry.

As a national model for community engagement and translational research, HealthStreet data can be utilized for Community Health Needs Assessments, hot-spotting analyses,<sup>3</sup> preliminary data for grants and cohort identification. The Registry includes people primarily in the Northeast Florida Corridor from Gainesville to Jacksonville, including rural areas.

This effort is funded through the UF NIH CTSA, the College of Medicine, College of Public Health and Health Professions, and NIDA.

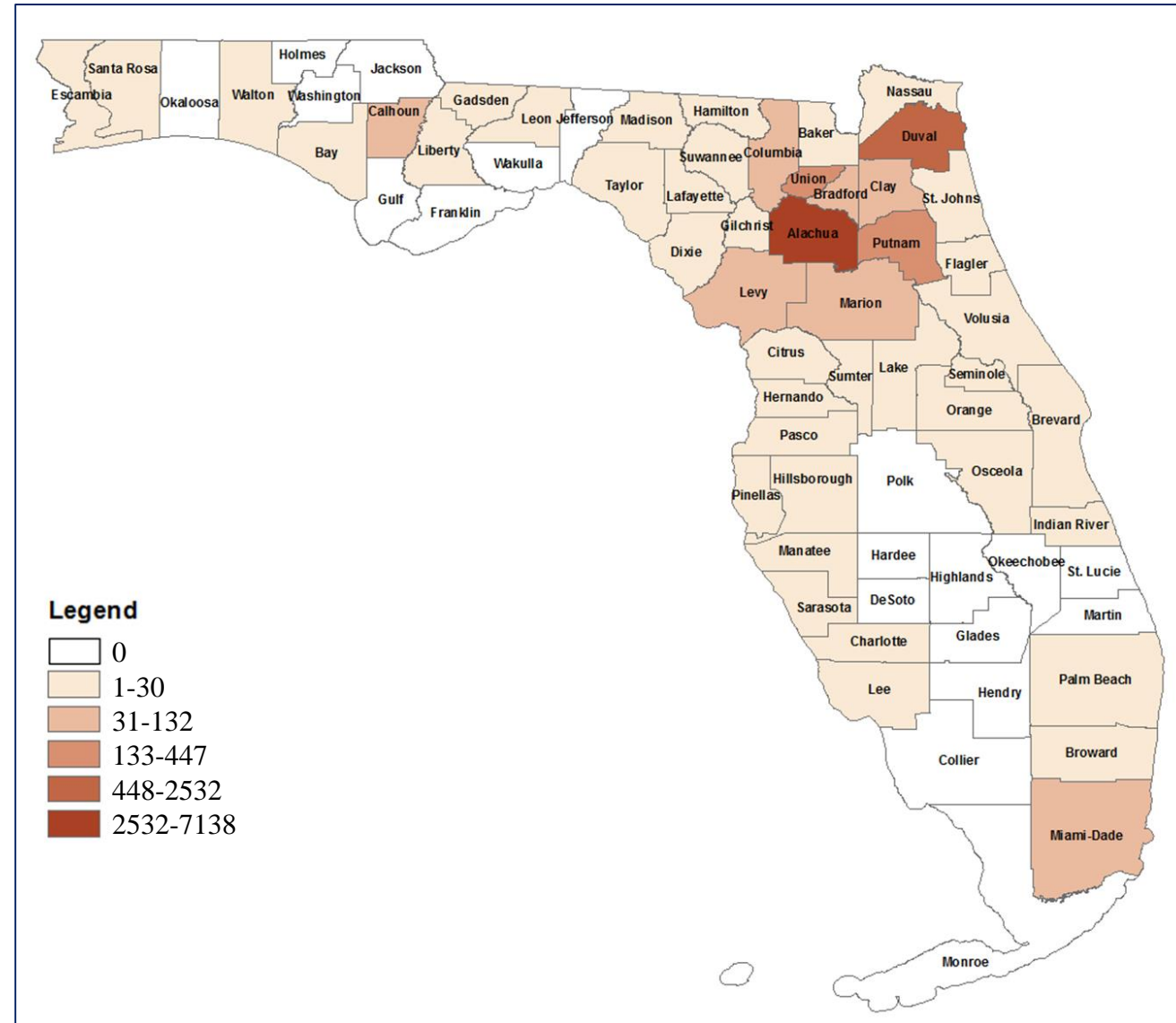
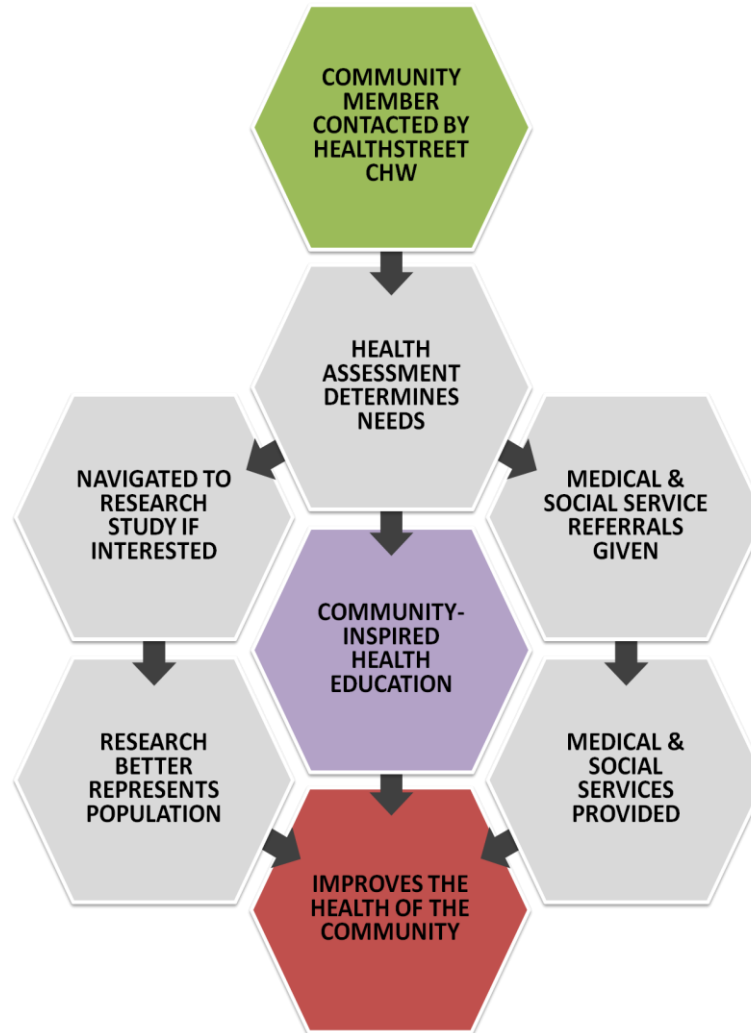


Figure 1: HealthStreet's reach in Florida by the county of residence of HealthStreet's members.

# Methodology

Data in this report is stratified by the year of intake of the community members. UF HealthStreet is operational since October 2011, and has members from 51 out of 67 counties in the state of Florida. Figure 1 shows the members from different counties recruited into HealthStreet program from October 2011- June 2019.



**Table 1: Demographics of HealthStreet members by Year of Intake**

	2011 n= 156	2012 n= 2304	2013 n= 1431	2014 n= 1669	2015 n= 1557	2016 n= 1375	2017 n= 1224	2018 n= 1264	2019 n= 412	Total n= 11396
<b>Gender</b>										
Female	48.1%	53.9%	57.3%	56.4%	62.0%	67.6%	65.0%	61.9%	61.7%	6806 (59.7%)
Male	51.9%	45.9%	42.7%	43.6%	37.8%	32.3%	34.3%	38.0%	37.9%	4566 (40.1%)
<b>Average Age</b>										
Female: Mean (SD)	42.3 (14.6)	40.7 (15.7)	40.1 (15.5)	44.0 (15.9)	46.5 (17.2)	47.5 (16.3)	49.4 (18.0)	45.3 (17.3)	48.9 (18.9)	44.7 (16.9)
Male: Mean (SD)	37.1 (14.7)	41.0 (15.6)	41.2 (15.8)	45.1 (15.0)	46.4 (17.0)	48.7 (16.0)	49.7 (17.2)	45.1 (17.4)	49.0 (18.5)	44.6 (16.5)
<b>Race/ Ethnicity</b>										
Asian	0.6%	1.9%	1.0%	0.7%	0.6%	1.4%	1.2%	2.1%	1.5%	146 (1.3%)
African-American	62.8%	64.1%	58.3%	65.1%	63.5%	53.2%	44.4%	46.0%	28.4%	6457 (56.7%)
White	29.5%	28.0%	33.8%	28.6%	31.5%	41.7%	48.2%	45.6%	64.1%	4148 (36.4%)
Other	7.1%	5.6%	6.8%	5.5%	4.4%	3.7%	6.3%	6.4%	6.1%	631 (5.5%)
Latino/Hispanic *	1.9%	5.1%	5.9%	4.7%	5.1%	9.4%	9.1%	8.8%	6.6%	739 (6.5%)
<b>Marital Status</b>										
Never Married	62.2%	51.9%	52.4%	49.0%	44.4%	40.9%	36.8%	44.7%	38.3%	5288 (46.4%)
Married	15.4%	22.2%	18.2%	17.6%	21.2%	23.2%	25.7%	21.6%	20.6%	2410 (21.1%)
Divorced/Separated/Widowed	22.4%	25.7%	29.1%	33.4%	34.3%	35.2%	37.0%	33.3%	40.8%	3662 (32.1%)
<b>BMI</b>										
Female: Mean (SD)	31.8 (8.6)	30.7 (8.1)	30.3 (8.6)	30.6 (8.3)	30.6 (8.5)	30.0 (8.0)	30.1 (8.3)	30.4 (8.4)	29.1 (7.7)	30.4 (8.3)
Male: Mean (SD)	27.3 (6.3)	27.9 (6.1)	27.2 (6.0)	27.4 (6.1)	27.8 (6.4)	27.9 (6.6)	28.2 (6.3)	28.1 (6.2)	28.1 (5.7)	27.7 (6.2)
12+ years of education	71.2%	77.4%	79.6%	77.5%	79.6%	80.8%	83.3%	83.5%	83.3%	9095 (79.8%)
Currently Employed	30.8%	37.8%	37.6%	29.9%	32.0%	33.2%	37.7%	37.5%	31.1%	3975 (34.9%)
Veteran Status	9.0%	9.3%	10.0%	9.0%	11.3%	8.5%	11.1%	12.9%	12.4%	1164 (10.2%)
Household Size: Mean (SD)	3.2 (3.6)	3.4 (3.3)	3.3 (2.6)	2.9 (3.1)	2.9 (2.4)	2.8 (2.2)	2.7 (2.7)	2.8 (2.2)	2.5 (2.1)	3.0 (2.7)
Food Insecure (not enough money to buy food)	48.7%	44.8%	45.7%	48.2%	47.3%	49.4%	40.7%	46.8%	48.5%	5272 (46.3%)
Pets (cat or dog)	0.0%	0.0%	0.0%	9.2%	30.6%	37.2%	41.3%	40.9%	43.4%	2344 (36.6%)
Uses social media or text messaging	59.0%	62.5%	73.8%	77.8%	82.1%	88.1%	85.2%	88.3%	88.8%	8900 (78.1%)

\*Latino/Hispanic is not mutually exclusive with other races.

**Table 1** shows demographic information of HealthStreet members. Data is collected from individual questions asked of all members.

**Table 2** shows access to care among HealthStreet members. Data is collected from questions asked of each member.

	2011 n= 156	2012 n= 2304	2013 n= 1431	2014 n= 1669	2015 n= 1557	2016 n= 1375	2017 n= 1224	2018 n= 1264	2019 n= 412	Total n= 11396
No doctor visit within past 6 months	37.8%	38.6%	34.8%	35.1%	28.2%	26.5%	22.5%	21.9%	23.8%	3486 (30.6%)
No physical exam within past 12 months	37.8%	33.3%	37.3%	37.4%	30.8%	28.8%	25.7%	25.7%	30.8%	3626 (31.8%)
Been to ER within past 6 months	0.6%	28.0%	32.9%	34.5%	32.7%	31.9%	33.3%	36.0%	37.9%	3658 (32.1%)
Receives health care or health services at UF Health/ Shands *	0.0%	0.0%	20.0%	36.8%	38.2%	37.1%	36.7%	36.7%	32.0%	2338 (36.8%)
Ever had a colonoscopy (over 50 years) **	51.2%	49.4%	53.4%	49.4%	57.1%	53.2%	62.4%	60.5%	67.6%	2731 (55.4%)
Ever had a mammogram (women over 40 years) ***	83.7%	85.5%	85.3%	83.1%	88.1%	87.6%	91.6%	91.0%	91.0%	3497 (87.5%)
Ever screened for prostate cancer (men over 45 years) ****	NA	NA	NA	52.1%	55.0%	57.5%	59.7%	52.5%	51.1%	770 (55.3%)

\*Total Sample Size= 6,345

\*\* Total Sample Size= 4,931

\*\*\* Total Sample Size= 3,995

\*\*\*\* Total Sample Size= 1,393

**Table 3** shows research perceptions among HealthStreet members. Data is collected from individual questions asked of all members.

	2011 n= 156	2012 n= 2304	2013 n= 1431	2014 n= 1669	2015 n= 1557	2016 n= 1375	2017 n= 1224	2018 n= 1264	2019 n= 412	Total n= 11396
Ever been in a health research study	22.4%	13.6%	17.9%	16.6%	21.6%	22.0%	19.2%	22.1%	20.4%	2119 (18.6%)
Interested in participating in research	89.1%	87.5%	92.8%	96.2%	95.4%	96.7%	92.6%	93.0%	96.4%	10611 (93.1%)
<b>Would you volunteer for a health research study:</b>										
That only asked questions about your health	90.4%	91.3%	92.7%	94.8%	94.3%	96.6%	93.7%	93.5%	97.1%	10680 (93.7%)
If researchers wanted to see your medical records	85.3%	82.4%	85.7%	87.8%	88.2%	90.5%	85.9%	85.7%	91.5%	9851 (86.4%)
If you had to give a blood sample	84.6%	81.6%	84.6%	85.0%	87.5%	87.9%	86.2%	85.4%	90.8%	9719 (85.3%)
If you were asked to give a sample for genetic studies	80.8%	81.2%	84.0%	83.7%	86.6%	91.5%	88.0%	85.6%	88.6%	9726 (85.3%)
If you might have to take medicine	53.2%	54.6%	59.7%	65.8%	66.0%	64.7%	56.2%	55.4%	60.0%	6845 (60.1%)
If you were asked to stay overnight in a hospital or clinic	69.2%	65.5%	70.2%	75.4%	77.5%	76.0%	69.0%	71.0%	72.3%	8172 (71.7%)
If you might have to use medical equipment	76.9%	76.0%	81.8%	84.7%	86.0%	89.2%	86.3%	85.4%	87.9%	9521 (83.5%)
If you didn't get paid	76.9%	74.0%	77.9%	79.3%	80.1%	83.6%	76.5%	71.6%	81.1%	8833 (77.5%)

**Table 4: Overall Health Conditions of HealthStreet members by Year of Intake**

	2011 n= 156	2012 n= 2304	2013 n= 1431	2014 n= 1669	2015 n= 1557	2016 n= 1375	2017 n= 1224	2018 n= 1264	2019 n= 412	Total n= 11396
ADD/ADHD	11.5%	6.9%	8.3%	6.7%	8.5%	7.2%	8.9%	9.3%	14.3%	925 (8.1%)
Allergies (Animal, Drug, Food, Seasonal, Other)	42.3%	38.0%	44.1%	41.7%	49.4%	47.6%	49.3%	54.8%	2.7%	5000 (43.9%)
Anemia	15.4%	10.5%	13.2%	16.1%	13.2%	14.2%	16.0%	14.9%	17.5%	1580 (13.9%)
Antibiotic Resistant Infection	1.3%	2.1%	2.7%	2.8%	2.5%	2.2%	4.4%	4.0%	3.4%	322 (2.8%)
Arthritis (Gout, Osteoarthritis, Other)	19.9%	22.5%	20.5%	19.9%	20.6%	28.2%	31.0%	27.9%	34.7%	2759 (24.2%)
Asthma	12.8%	17.9%	17.9%	16.8%	21.0%	20.2%	20.5%	20.4%	19.7%	2164 (19.0%)
Autism	0.6%	0.3%	0.3%	0.6%	0.6%	0.5%	0.9%	0.5%	1.0%	60 (0.5%)
Autoimmune (Lupus, Scleroderma, Rheumatoid Arthritis)	6.4%	5.1%	4.5%	10.4%	12.8%	9.7%	10.1%	7.6%	11.9%	966 (8.5%)
Back Pain, Bone Pain	42.9%	40.6%	44.2%	50.5%	52.2%	52.5%	49.6%	50.6%	58.5%	5502 (48.3%)
Brain/Spinal/Nervous System (Cerebral Palsy, Down Syndrome, Paralysis)	0.6%	0.9%	0.7%	0.5%	1.0%	1.2%	1.6%	0.7%	0.0%	103 (0.9%)
Breathing/Lung (Chronic Bronchitis, Chronic Sinus Infections, Pneumonia)	10.9%	12.3%	15.2%	16.4%	21.1%	19.3%	21.7%	20.3%	18.2%	1983 (17.4%)
Cancer (type and treatment recorded but not reported here)	5.1%	6.2%	7.3%	7.0%	10.1%	10.2%	11.7%	10.4%	14.1%	1002 (8.8%)
COPD/Emphysema	3.2%	3.7%	4.8%	5.9%	6.0%	7.4%	7.7%	8.1%	9.5%	689 (6.0%)
Dementia	1.3%	0.8%	1.0%	1.6%	2.3%	1.5%	3.1%	2.8%	9.7%	232 (2.0%)
Dental (Dentures, halitosis, periodontal disease, untreated cavities)	34.0%	33.9%	36.8%	47.5%	47.8%	51.3%	48.2%	43.4%	52.7%	4956 (43.5%)
Diabetes (Type 1 & Type 2)	13.5%	11.3%	10.6%	13.1%	15.8%	15.7%	15.7%	13.0%	17.2%	1541 (13.5%)
Digestive Health (Acid Reflux, Crohn's Disease, Diverticulitis, Esophagitis, Gallstones, Irritable Bowel Syndrome, Pancreatitis, Ulcer, Ulcerative Colitis)	26.3%	27.0%	29.4%	31.2%	36.5%	36.3%	40.9%	35.4%	41.3%	3791 (33.3%)
Headaches	34.0%	28.0%	30.3%	34.7%	41.0%	39.2%	38.3%	40.7%	35.9%	4019 (35.3%)
Hearing (Hearing Loss, Tinnitus, Vertigo)	12.2%	16.3%	20.8%	20.4%	28.1%	26.5%	33.7%	30.5%	37.1%	2787 (24.5%)
Heart/Circulation (Arrhythmias, Clots, Coronary Artery Disease, Heart Attack, Heart Murmur, Mitral Valve Prolapse, Deep Vein Thrombosis)	9.6%	11.9%	13.4%	12.9%	17.3%	16.5%	19.7%	17.6%	17.0%	1728 (15.2%)
Hepatitis C	1.9%	1.9%	1.7%	3.2%	3.9%	2.5%	2.9%	3.2%	1.9%	305 (2.7%)
Hypertension	36.5%	31.0%	30.3%	36.5%	41.6%	35.3%	40.8%	35.6%	41.7%	4069 (35.7%)
High Cholesterol	17.9%	14.8%	14.5%	18.9%	23.6%	22.9%	27.2%	21.4%	26.7%	2288 (20.1%)
HIV/AIDS	0.6%	1.0%	2.4%	2.5%	2.5%	1.5%	2.0%	1.7%	2.2%	214 (1.9%)

**Table 4** shows health conditions among HealthStreet members. The respondent self-reports a history of health conditions based on responses to the question “Have you ever been told you had, or have you ever had a problem with (*CONDITION*).”



**Table 4: Overall Health Conditions of HealthStreet members by Year of Intake (contd.)**

	2011 n= 156	2012 n= 2304	2013 n= 1431	2014 n= 1669	2015 n= 1557	2016 n= 1375	2017 n= 1224	2018 n= 1264	2019 n= 412	Total n= 11396
HPV	1.9%	1.5%	3.1%	2.9%	2.6%	1.7%	3.9%	2.1%	2.9%	279 (2.4%)
Infectious Diseases (Meningitis, Rheumatic Fever, Shingles, Tuberculosis)	5.8%	4.2%	4.2%	5.2%	6.2%	7.4%	9.2%	7.3%	9.5%	693 (6.1%)
Kidney/Urinary (Incontinence, Kidney Failure, Kidney Stones, Urinary Tract Infections)	12.2%	17.6%	21.5%	21.9%	20.6%	21.4%	27.1%	27.7%	17.0%	2465 (21.6%)
Liver Cirrhosis	0.6%	0.6%	0.6%	1.0%	1.9%	0.9%	1.1%	1.3%	1.2%	116 (1.0%)
Mental Health Disorder, Other (Eating Disorder, Personality Disorder, Schizophrenia)	5.8%	5.9%	7.9%	8.1%	10.8%	8.1%	10.8%	11.0%	15.0%	1006 (8.8%)
Mood Disorders/Anxiety (Anxiety, Bipolar Disorder, Depression, Mania)	31.4%	26.7%	33.0%	39.8%	41.8%	42.6%	45.8%	48.3%	57.8%	4447 (39.0%)
Movement Disorder (Parkinson’s Disease, Restless Leg Syndrome, Tourette Syndrome)	7.1%	3.2%	5.0%	5.5%	8.0%	8.1%	9.0%	8.7%	14.6%	763 (6.7%)
Multiple Sclerosis	0.0%	0.4%	0.6%	1.1%	0.6%	0.8%	0.2%	0.9%	1.5%	76 (0.7%)
Muscle/Bone (Fibromyalgia, Osteomyelitis, Osteoporosis, Scoliosis)	5.8%	5.9%	10.6%	9.5%	12.0%	13.2%	14.1%	12.8%	21.4%	1247 (10.9%)
Reproductive Health (Infertility)	1.9%	2.6%	4.2%	5.2%	4.6%	4.1%	4.5%	4.0%	4.4%	462 (4.1%)
Seizures	7.1%	3.6%	3.7%	4.5%	4.8%	5.8%	5.0%	5.2%	5.1%	525 (4.6%)
Serious Head Injury	3.8%	3.7%	4.0%	5.6%	7.3%	6.8%	6.9%	6.9%	11.2%	666 (5.8%)
Sickle Cell Disease	2.6%	1.0%	1.0%	0.8%	0.5%	0.7%	0.3%	0.6%	0.2%	84 (0.7%)
Skin (Acne, Athlete's Foot, Cold Sores, Eczema, Psoriasis, Rash, Rosacea, Skin Ulcers)	25.6%	22.6%	31.0%	32.4%	34.6%	34.4%	35.1%	36.2%	20.4%	3527 (30.9%)
Sleep (Insomnia, Narcolepsy, Sleep Apnea, Sleep Walking)	27.6%	25.6%	29.8%	31.2%	34.8%	35.6%	39.3%	39.4%	46.6%	3781 (33.2%)
STIs (Chlamydia, Genital Warts, Gonorrhea, Herpes, Syphilis)	4.5%	6.7%	11.2%	11.3%	10.4%	8.9%	9.9%	8.5%	12.9%	1077 (9.5%)
Stroke/TIA	5.8%	3.3%	4.1%	3.8%	5.2%	4.7%	7.2%	5.4%	8.3%	542 (4.8%)
Thyroid (Hyperthyroidism, Hypothyroidism)	4.5%	3.5%	4.5%	5.1%	6.2%	7.0%	8.9%	6.6%	0.5%	625 (5.5%)
Vision (Cataracts, Glaucoma, Retinopathy)	5.8%	6.7%	8.4%	11.6%	13.4%	13.1%	18.8%	14.5%	15.8%	1344 (11.8%)
Weight Control	17.3%	11.2%	12.9%	15.2%	21.6%	20.7%	23.0%	22.8%	0.2%	1914 (16.8%)

**Table 4** shows health conditions among HealthStreet members. The respondent self-reports a history of health conditions based on responses to the question “Have you ever been told you had, or have you ever had a problem with (*CONDITION*).”

**Table 5: Substance Use trends of HealthStreet members by Year of Intake**

	2011 n= 156	2012 n= 2304	2013 n= 1431	2014 n= 1669	2015 n= 1557	2016 n= 1375	2017 n= 1224	2018 n= 1264	2019 n= 412	Total n= 11396
<b>Alcohol:</b> More than (men: 4, women: 3) alcoholic drinks in a single day, in the last 30 days	31.4%	24.8%	24.1%	24.0%	22.1%	20.4%	22.1%	25.5%	25.0%	2685 (23.6%)
<b>Club Drugs</b>										
Never	92.3%	94.1%	92.1%	93.7%	93.5%	93.3%	92.3%	89.3%	87.6%	10552 (92.6%)
Past user	5.8%	5.2%	6.8%	5.5%	6.0%	6.3%	7.5%	9.5%	10.9%	755 (6.6%)
Current user (past 30 days)	1.9%	0.5%	0.8%	0.7%	0.4%	0.1%	0.2%	0.6%	1.5%	60 (0.5%)
<b>Cocaine or crack</b>										
Never	80.8%	85.1%	80.9%	80.3%	80.3%	79.9%	79.9%	76.6%	71.6%	9176 (80.5%)
Past user	15.4%	13.6%	17.4%	16.7%	17.0%	18.5%	18.5%	20.8%	20.4%	1957 (17.2%)
Current user (past 30 days)	3.8%	1.2%	1.5%	2.9%	2.6%	1.5%	1.6%	2.3%	7.5%	243 (2.1%)
<b>Marijuana</b>										
Never	43.6%	54.4%	47.2%	49.2%	54.7%	49.2%	48.2%	41.0%	37.6%	5609 (49.2%)
Past user	29.5%	28.0%	35.1%	33.7%	31.7%	36.7%	34.1%	37.7%	37.6%	3805 (33.4%)
Current user (past 30 days)	26.9%	17.3%	17.5%	17.0%	13.6%	13.5%	17.6%	20.6%	24.8%	1949 (17.1%)
<b>Heroin</b>										
Never	95.5%	97.5%	97.0%	97.0%	96.9%	96.1%	96.7%	96.0%	95.1%	11021 (96.7%)
Past user	3.8%	2.3%	2.7%	2.9%	2.9%	3.6%	3.4%	3.3%	4.1%	342 (3.0%)
Current user (past 30 days)	0.0%	0.1%	0.1%	0.1%	0.2%	0.1%	0.0%	0.2%	0.5%	14 (0.1%)
<b>Speed or amphetamines</b>										
Never	93.6%	94.5%	91.8%	92.3%	91.8%	90.0%	89.2%	88.7%	84.0%	10405 (91.3%)
Past user	5.1%	5.1%	7.8%	7.1%	7.6%	9.3%	10.4%	10.0%	14.1%	913 (8.0%)
Current user (past 30 days)	0.6%	0.3%	0.2%	0.4%	0.5%	0.5%	0.3%	0.6%	1.9%	50 (0.4%)
<b>Prescription pain medication</b>										
Never	60.3%	57.1%	51.2%	48.6%	45.6%	44.3%	44.4%	46.4%	37.4%	5557 (48.8%)
Past user	32.1%	29.7%	35.1%	36.4%	39.1%	41.3%	42.2%	41.0%	48.8%	4257 (37.4%)
Current user (past 30 days)	7.7%	12.7%	13.1%	14.7%	15.0%	14.0%	12.9%	11.9%	12.1%	1520 (13.3%)
<b>Adderall or Ritalin</b>										
Never	92.3%	93.6%	91.8%	93.6%	93.7%	92.9%	91.8%	89.5%	86.7%	10524 (92.3%)
Past user	7.7%	5.0%	6.6%	5.5%	5.3%	5.8%	6.9%	8.5%	10.7%	711 (6.2%)
Current user (past 30 days)	0.0%	0.7%	0.8%	0.8%	0.8%	1.0%	1.2%	1.7%	1.7%	110 (1.0%)

**Table 5** shows substance use among HealthStreet members.

Substance use status is measured from the health assessment by asking questions such as “Have you ever used (*SUBSTANCE*)?” Respondents answering “No” are coded “**Never.**”

Respondents answering “Yes” would then be asked the follow-up question “Have you used (*SUBSTANCE*) in the last 30 days?” Those answering “Yes” are coded “**Current user,**” while those answering “No” are coded “**Past Users.**”

**Table 5: Substance Use trends of HealthStreet members by Year of Intake (contd.)**

	2011 n= 156	2012 n= 2304	2013 n= 1431	2014 n= 1669	2015 n= 1557	2016 n= 1375	2017 n= 1224	2018 n= 1264	2019 n= 412	Total n= 11396
<b>Prescription medication for anxiety and sleep</b>										
Never	84.0%	83.4%	77.4%	77.9%	74.6%	72.0%	69.3%	67.4%	60.0%	8558 (75.1%)
Past user	12.8%	8.9%	13.5%	13.1%	14.3%	15.1%	15.8%	19.2%	26.5%	1613 (14.2%)
Current user (past 30 days)	3.2%	7.0%	8.7%	8.9%	11.0%	12.7%	14.5%	12.7%	13.1%	1178 (10.3%)
<b>Inhalants</b>										
Never	99.4%	99.0%	97.9%	98.4%	98.5%	97.9%	98.0%	97.6%	97.1%	11193 (98.2%)
Past user	0.6%	0.9%	1.8%	1.6%	1.5%	1.7%	1.8%	1.9%	2.7%	178 (1.6%)
Current user (past 30 days)	0.0%	0.0%	0.0%	0.0%	0.0%	0.3%	0.2%	0.2%	0.2%	11 (0.1%)
<b>Hallucinogens</b>										
Never	91.7%	95.3%	91.8%	93.2%	92.2%	90.9%	89.1%	89.5%	84.7%	10463 (91.8%)
Past user	7.1%	4.4%	7.4%	6.2%	7.3%	8.7%	10.8%	9.3%	13.8%	862 (7.6%)
Current user (past 30 days)	1.3%	0.1%	0.5%	0.5%	0.6%	0.1%	0.1%	0.7%	1.2%	46 (0.4%)
<b>Smoked cigarettes</b>										
Never	37.2%	47.0%	43.8%	52.8%	52.3%	49.5%	49.7%	47.5%	41.0%	5521 (48.4%)
Past user	16.7%	15.9%	18.4%	14.0%	20.2%	20.3%	25.2%	22.2%	26.7%	2185 (19.2%)
Current user (past 30 days)	46.2%	36.9%	37.6%	33.1%	27.4%	30.0%	25.1%	29.8%	31.8%	3668 (32.2%)
<b>Smoked cigars or cigarillos *</b>										
Never	NA	NA	NA	23.6%	74.2%	74.8%	70.7%	67.4%	63.3%	4560 (71.3%)
Past user	NA	NA	NA	5.5%	13.0%	13.1%	18.6%	18.6%	18.2%	1013 (15.8%)
Current user (past 30 days)	NA	NA	NA	4.9%	12.7%	12.0%	10.7%	13.4%	18.2%	820 (12.8%)
<b>Tobacco through hookah, bong, pipe *</b>										
Never	NA	NA	NA	28.6%	89.1%	86.8%	83.6%	81.2%	67.2%	5392 (84.3%)
Past user	NA	NA	NA	4.3%	8.3%	10.8%	13.9%	14.8%	24.3%	806 (12.6%)
Current user (past 30 days)	NA	NA	NA	1.0%	2.6%	2.0%	2.6%	3.7%	8.5%	199 (3.1%)
<b>E-cigarettes *</b>										
Never	NA	NA	NA	30.0%	89.7%	86.0%	85.1%	81.0%	75.0%	5459 (85.4%)
Past user	NA	NA	NA	2.7%	7.3%	10.4%	12.4%	13.9%	14.8%	691 (10.8%)
Current user (past 30 days)	NA	NA	NA	1.3%	2.9%	3.4%	2.6%	4.7%	10.0%	245 (3.8%)

\*Total Sample Size= 6,393

**Table 5** shows substance use among HealthStreet members.

Substance use status is measured from the health assessment by asking questions such as “Have you ever used (*SUBSTANCE*)?” Respondents answering “No” are coded “**Never.**”

Respondents answering “Yes” would then be asked the follow-up question “Have you used (*SUBSTANCE*) in the last 30 days?” Those answering “Yes” are coded “**Current user,**” while those answering “No” are coded “**Past Users.**”

**Table 6: Top Health Concerns of HealthStreet Members by Year of Intake**

	2011 n= 156	2012 n= 2304	2013 n= 1431	2014 n= 1669	2015 n= 1557	2016 n= 1375	2017 n= 1224	2018 n= 1264	2019 n= 412	Total n= 11396
Hypertension	35.3%	30.1%	26.3%	28.3%	29.4%	26.6%	22.8%	21.2%	22.1%	3060 (26.9%)
Diabetes	20.5%	19.7%	20.1%	19.1%	20.3%	21.2%	19.5%	19.1%	16.0%	2247 (19.7%)
Muscle and Bone Problems	13.5%	15.1%	16.6%	19.1%	19.1%	22.3%	17.9%	20.7%	19.7%	2092 (18.4%)
Weight Problems	11.5%	14.2%	17.1%	13.4%	13.3%	15.8%	17.6%	16.5%	14.6%	1719 (15.1%)
Cancer	20.5%	13.6%	14.0%	15.2%	12.7%	14.2%	12.4%	10.2%	8.0%	1506 (13.2%)
Heart Problems	15.4%	14.2%	12.4%	11.3%	11.9%	14.5%	14.4%	13.4%	13.8%	1505 (13.2%)
Oral Health	7.1%	12.1%	11.9%	20.9%	16.2%	12.4%	8.0%	8.1%	14.1%	1491 (13.1%)
Mental Health	10.9%	7.3%	12.1%	12.1%	11.1%	14.8%	15.2%	16.8%	15.0%	1396 (12.2%)

**Table 6** shows the top health concerns among HealthStreet members. The CHW asks the respondent “What are your top three health concerns?” The health concerns are ordered by prevalence and are in members’ own words.

**Table 7: Top Neighbourhood Concerns of HealthStreet members by Year of Intake**

	2011 n= 156	2012 n= 2304	2013 n= 1431	2014 n= 1669	2015 n= 1557	2016 n= 1375	2017 n= 1224	2018 n= 1264	2019 n= 412	Total n= 11396
Safety/Crime	39.7%	21.6%	23.5%	23.7%	26.1%	29.2%	25.9%	21.5%	21.1%	2776 (24.4%)
Health	7.7%	10.2%	13.5%	6.9%	5.5%	8.7%	8.3%	7.9%	10.9%	1007 (8.8%)
Drugs	8.3%	8.2%	9.1%	6.2%	5.1%	5.6%	8.3%	7.5%	5.8%	814 (7.1%)

**Table 7** shows the top neighborhood concerns among HealthStreet members. The CHW asks the respondent “What do you think is the most important concern for your neighborhood?” The neighborhood concerns are ordered by prevalence and are in members’ own words.

## References

1. Cottler LB, McCloskey DJ, Aguilar-Gaxiola S, Bennett NM, Strelnick H, Dwyer-White M, Collyar DE, Ajinkya S, Seifer SD, O'Leary CC, Striley CW, Evanoff B. Community needs, concerns, and perceptions about health research: findings from the Clinical and Translational Science Award Sentinel Network. *Am J Public Health* 2013; 103: 1685–1692.
2. Webb FJ, Striley CW, Cottler LB. Marijuana use and its association with participation, navigation, and enrollment in health research among African Americans. *J Ethn Subst Abuse* 2015; 25: 1–15.
3. Ruktanonchai CW, Pindolia DK, Striley CW, Odedina FT, Cottler LB. Utilizing spatial statistics to identify cancer hot spots: a surveillance strategy to inform community-engaged outreach efforts. *Int J Health Geogr* 2014, 13: 39.
4. Cottler LB, Striley CW, O'Leary CC, Ruktanonchai CW, Wilhelm KA. Engaging the community in research with the HealthStreet model: national and international perspectives. *Translational Medicine – What, Why and How: An International Perspective. Translational Research in Biomedicine*. Basel, Karger, 2013; 3: 98–109.
5. Cottler LB, Nagarajan R. Real-time assessment of community health needs and concerns. *Sci Transl Med* 2012; 1: 4(119).
6. Cottler LB, Callahan C, Striley CW. HealthStreet: A community-based approach to include mental health in public health research. *Mental Health in Public Health: The Next 100 Years*. New York, NY: Oxford University Press; 2011: 247–273.

## Contact Us

Customized reports are available for:

- Community Health Needs Assessment
- Preliminary data for grants
- Cohort identification
- Navigation of screened and eligible participants in our database to your research studies

Please let us know how we can help you.

Linda B. Cottler, PhD, MPH

Email: [lbcottler@ufl.edu](mailto:lbcottler@ufl.edu)

Phone: (352) 273-5468